



1 bakery

2 bank

3 barber shop

4 book store

5 bus station

6 candy store

7 car dealership

8 card store

9 child-care center/
day-care center

10 cleaners / dry cleaners

11 clinic

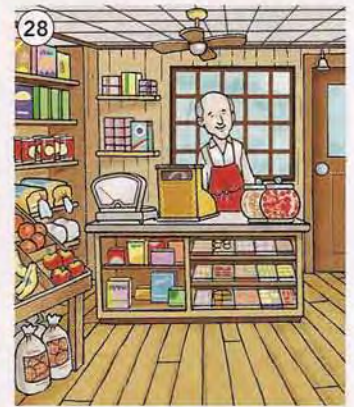
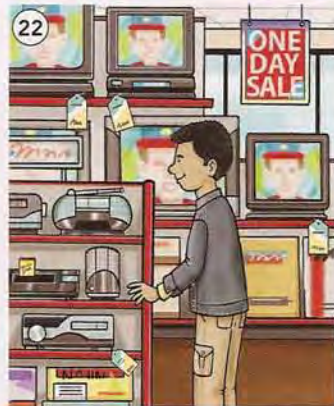
12 clothing store

13 coffee shop

14 computer store

15 convenience store

16 copy center



17 delicatessen/deli

18 department store

19 discount store

20 donut shop

21 drug store/pharmacy

22 electronics store

23 eye-care center/optician

24 fast-food restaurant

25 flower shop/florist

26 furniture store

27 gas station/service station

28 grocery store



- A. Where are you going?
B. I'm going to the **bakery**.

- A. Hi! How are you today?
B. Fine. Where are you going?
A. To the _____. How about you?
B. I'm going to the _____.

- A. Oh, no! I can't find my wallet/purse!
B. Did you leave it at the _____?
A. Maybe I did.

Which of these places are in your neighborhood?
(In my neighborhood there's a/an)



1 hair salon

2 hardware store

3 health club

4 hospital

5 hotel

6 ice cream shop

7 jewelry store

8 laundromat

9 library

10 maternity shop

11 motel

12 movie theater

13 music store

14 nail salon

15 park

16 pet shop/pet store



- 17 photo shop
- 18 pizza shop
- 19 post office
- 20 restaurant

- 21 school
- 22 shoe store
- 23 (shopping) mall
- 24 supermarket

- 25 toy store
- 26 train station
- 27 travel agency
- 28 video store

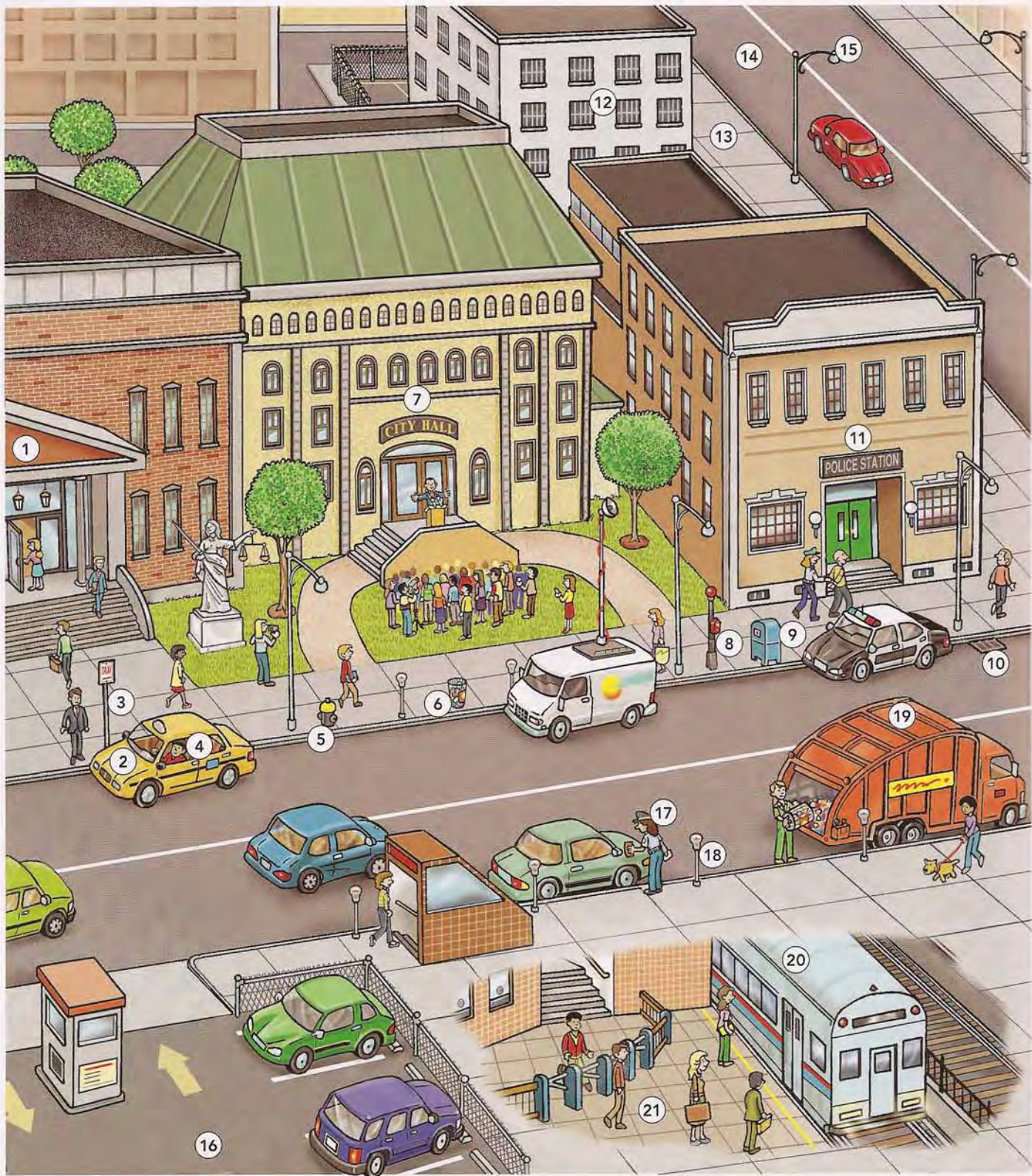


- A. Where's the **hair salon**?
- B. It's right over there.

- A. Is there a/an _____ nearby?
- B. Yes. There's a/an _____ around the corner.
- A. Thanks.

- A. Excuse me. Where's the _____?
- B. It's down the street, next to the _____.
- A. Thank you.

Which of these places are in your neighborhood?
(In my neighborhood there's a/an)

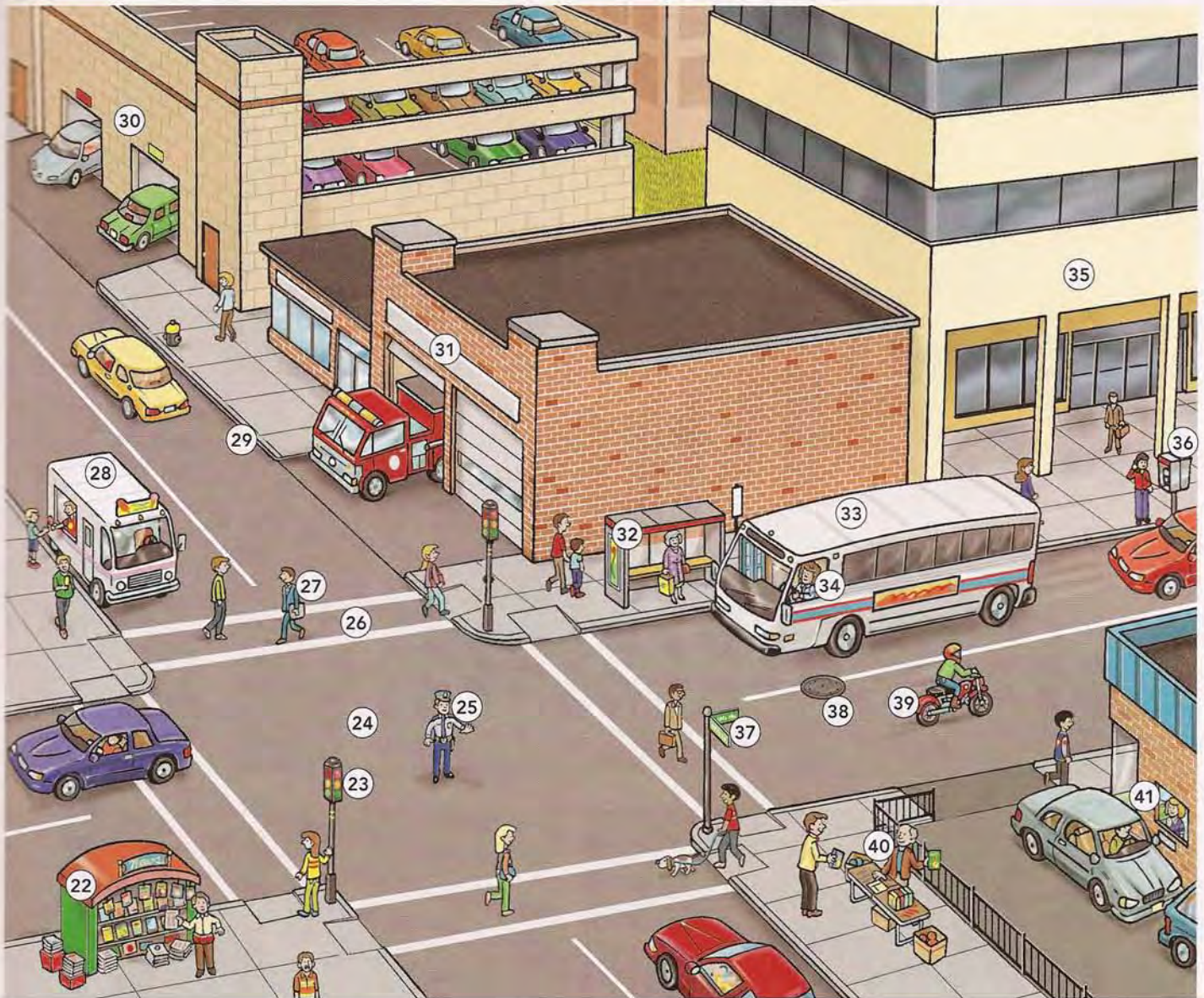


- 1 courthouse
- 2 taxi/cab/taxicab
- 3 taxi stand
- 4 taxi driver/cab driver
- 5 fire hydrant
- 6 trash container

- 7 city hall
- 8 fire alarm box
- 9 mailbox
- 10 sewer
- 11 police station

- 12 jail
- 13 sidewalk
- 14 street
- 15 street light
- 16 parking lot

- 17 meter maid
- 18 parking meter
- 19 garbage truck
- 20 subway
- 21 subway station



- | | | | |
|--------------------------------------|--------------------|---------------------|-------------------------|
| 22 newsstand | 27 pedestrian | 32 bus stop | 37 street sign |
| 23 traffic light /
traffic signal | 28 ice cream truck | 33 bus | 38 manhole |
| 24 intersection | 29 curb | 34 bus driver | 39 motorcycle |
| 25 police officer | 30 parking garage | 35 office building | 40 street vendor |
| 26 crosswalk | 31 fire station | 36 public telephone | 41 drive-through window |



- A. Where's the _____?
- B. On/In/Next to/Between/Across from/
In front of/Behind/Under/Over the _____.

[An Election Speech]

If I am elected mayor, I'll take care of all the problems in our city. We need to do something about our _____s. We also need to do something about our _____s. And look at our _____s! We REALLY need to do something about THEM! We need a new mayor who can solve these problems. If I am elected mayor, we'll be proud of our _____s, _____s, and _____s again! Vote for me!

Go to an intersection in your city or town. What do you see? Make a list. Then tell about it.